

HANDSWORTH

NEWS

13th January 2023

HEADLINES

OPEN CLASSROOMS

We are excited to open our classroom doors to you next Wednesday 18th January.

You are welcome to come in and share your child's learning with them.

For Nursery and Reception, we will run two phonics sessions and you can come to either one. Please arrive for the beginning of the session.
Session 1 - 3:30 - 4:00
Session 2 - 4:30 - 5:00

All other classrooms will be open from 3.30pm - 5pm.

We look forward to seeing you.

PUPIL PREMIUM

The Government has confirmed that from April 2023, pupil premium funding will increase. This funding is used to support your child.

[Click here to apply!](#)



PARENT SURVEY

Thank you so much to everyone who completed the parent survey. We had 119 responses this year, which is 4 more than last year!

The results have been collated and will be shared with Governors and Staff. There is so much to celebrate! We will also use your feedback to learn and will then work together to see how we can improve further.

Thank you for your feedback, it is always much appreciated.





We are proud to announce that we have been awarded the the TfL Bronze level accreditation in recognition of achievement in active and safer travel initiatives.



FORTNITE

Since its release 2017, the battle-royale simulator – Fortnite, has become popular with adults and children throughout the world. The game, which features cartoonish renderings of characters, bright colours and consequence-free violence, has had a mass appeal to children.

As a result, more children than ever are exposed to multi-player chatting with strangers and the possibility of financial exploitation via the game's spend-to-gain-advantage operating style. Allowing children to use real-world money to gain perks and costumes.

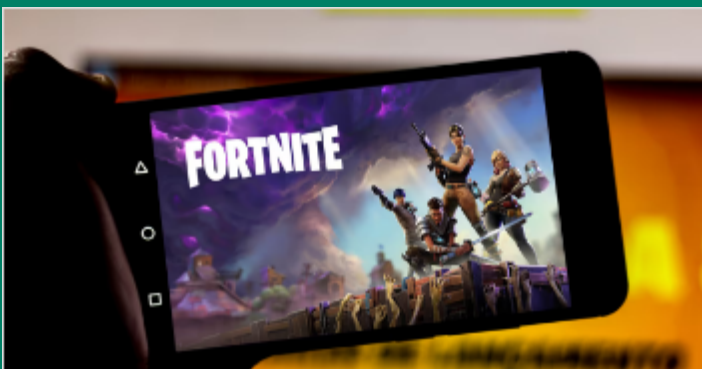
As an added complication, the language surrounding the game can be difficult to understand, Internetmatters.org has published a guide to understanding the game and its terms. You can find the link below:



If you are applying for a Reception place for September 2023, the closing date for applications is 15th January 2023.

Please ensure your applications are submitted by the closing date; otherwise, they will be considered as late applications and processed after national offer day.

Applications can be made on the eAdmissions website. Parents can visit the Waltham Forest website for further information.



Fortnite Battle Royale - What parents need to know

Tech expert Andy Robertson runs through Fortnite Battle Royale's features and benefits, and offers



We've published Christmas VR safety advice in response to public concerns about child...

With more parents more likely to buy their children VR headsets, we've developed a guide for parents to support families buying Virtual Reality (VR) headset...



THE BIG GARDEN BIRDWATCH IS HAPPENING FROM THE 27TH TO THE 29TH OF JANUARY.

Our eco priorities are:

- Reduce waste
- Increase biodiversity
- Save energy

We are encouraging children's interest in local wildlife! It's a chance to take part in an important survey to record and submit how many of each species are landing within one hour in their local area.





Autumn Term 2023 (74 days)

Inset Days:	Monday 4 th September 2023 Tuesday 5 th September 2023
Start of Term:	Wednesday 6th September 2023
Half Term:	Monday 23 rd October to Friday 27 th October
Inset Day:	21 st December 2023
End of Term:	Wednesday 20th December 2023 at 2.30pm
Christmas:	Friday 22 nd December 2023 to Friday 5 th January 2024

Spring Term 2024 (54 days)

Start of Term:	Monday 8th January 2024
Half Term:	Monday 12 th February to Friday 16 th February 2024
End of Term:	Wednesday 27th March 2024 at 2.30pm
Inset Day:	Thursday 28 th March 2024

Summer Term 2024 (67 days)

Start of Term:	Monday 15th April 2024
Spring Bank Holiday:	Monday 6 th May 2024
Inset Day	Friday 24 th May 2024
Half Term:	Monday 27 th May 2024 to Friday 31 st May 2024
End of Term:	Wednesday 24th July 2024 at 2.30pm

INCLUSION

On Friday 3rd February, we have Early Help talking at our coffee morning about their service and how they can support people.

Waltham Forest Parent Forum will also be attending and talking about their service and how they support parents.

Both are services that parents can access themselves and are great.

Please find more information by clicking on the links below.



Choose your battles

All humans resist feeling controlled by someone else, and kids are no different. The more they feel 'pushed around' the more they rebel. That's a good thing! Training a child to be obedient means you'll always have to be there to give orders, and as they grow up they may find it more difficult to stand up for themselves. Instead, teaching a child self-discipline raises a child who can think for themselves, stand up for what's right, and isn't likely to be taken advantage of.

How can parents help?

Choose your battles. Make sure child knows you are on his/her side and that they have some choices. When you feel you are entering a power struggle, offer them choices that you feel OK with. This will allow them to feel they have some control, while you also continue to have your boundaries. Coach your child rather than trying to control him/her.

With best wishes,

Greta

Integrative Child Psychotherapist



Public Stargazing and Observing

15th Jan 29th Jan 25th Feb



Join members of the Loughton Astronomical Society for a series of public family stargazing evenings.

See the planets and much more.

Displays and demonstrations if cloudy.

Do you have a telescope and always wondered how to get the best out of it? Come along to our Scope Doctor clinic.

Scout Hall, Loughton Lane, Theydon Bois CM16 7EJ

From 6:30pm to about 9pm. No charge.

Warm clothes recommended, young children to be accompanied by an adult.

<https://las-astro.org.uk/>



The LAS welcomes guests and new members to both our adult and AstroKyd's junior section. See our website for the full programme.



MUSIC OF THE WEEK



Persian Traditional Music

Each week we introduce the children to different musical artists or genres. The children listen to this music around the school, in class and in assemblies.

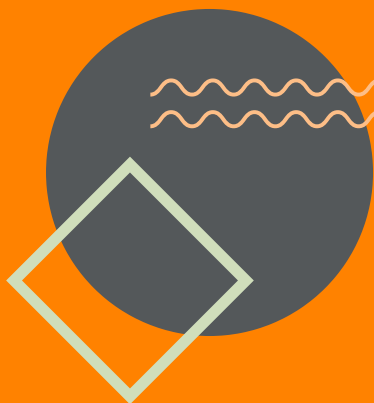


We are so proud of Max in Year 6 who has been chosen by the BBC to be one of the '100 Londoners' for their centenary celebrations. He's been on BBC Radio London talking about issues in the news affecting children, the local area and about the music he has composed.

Here are the links if you have time to listen.



EQUITY, DIVERSITY & INCLUSION.



The Public Sector Equality Duty is a legal requirement that applies to schools in England and Wales. It requires schools to eliminate discrimination, advance equality of opportunity, and foster good relations between people who have a protected characteristic and those who do not. The protected characteristics are age, disability, gender, race, religion or belief, sexual orientation, and pregnancy and maternity.

As a parent, your views and experiences are important in helping our school to understand any barriers to equality and what we can do to address them. We would be grateful if you could take a few minutes to complete a short survey to help us develop an action plan to promote equality at our school. Your responses will be treated confidentially and will only be used to inform the development of the action plan. Thank you in advance for your support.

STAR OF THE WEEK

The purpose of Star of the Week is for us to have the opportunity to celebrate every child in our community specifically. We encourage everyone to celebrate what is wonderful about that child. Children do not need to do anything to earn Star of the Week – each child deserves it and they will each get a turn. The stars also have the opportunity to have tea with Mrs Nairne and Ms Addai.

If your child is Star of the Week we encourage you to ask them to repeat to you some of the positive statements their classmates and teachers make about them and add your own!



EYFS

NHW

LAKE

RAO

ESMAE

RHH

COOPER &
KANE

KS2

3TC

JONAS

3LB

ELODIE

4JG

FAIZAN

4FB

ISABELLE

SRT

ISLA

5MW

OLIVER

6SN

RYAN

6MU

KAMARI

KS1

1IL

CUBA

1MJ

LUKE

2KC

HABIBA

2BD

RILEY

